

OUR HOPE FOR THE FUTURE?

A world where all individuals living with autism will reach their full potential.

Visit all of our Homes for Sale:

Terrybrook Farms

10606 W. 173rd Terrace
Overland Park, KS 66221

Terrybrook Farms

10802 W. 173rd Terrace
Overland Park, KS 66221

Old Leawood

2908 W. 86th Street
Leawood, KS 66206

CONTACT INFO

Mauria Stonestreet

Executive Director

PO BOX 11649

Overland Park, KS 66207

T: 847.275.1123

E: mstonestreet@buildinghopeforautism.org

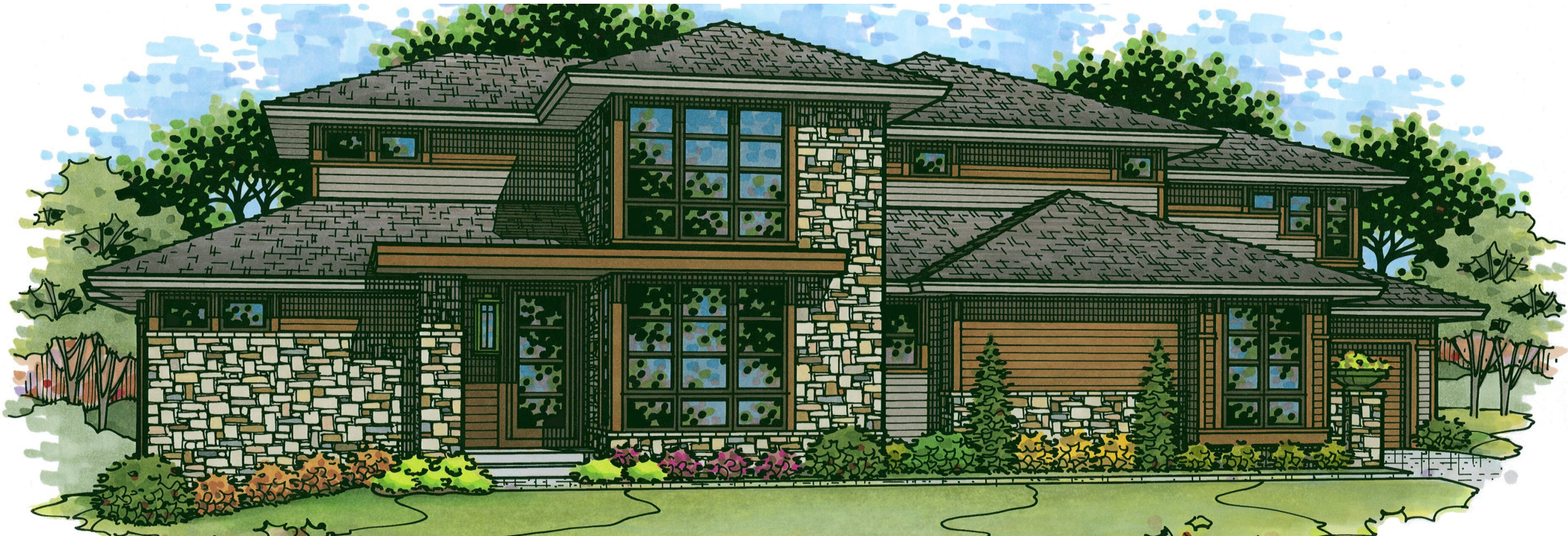
W: www.buildinghopeforautism.org

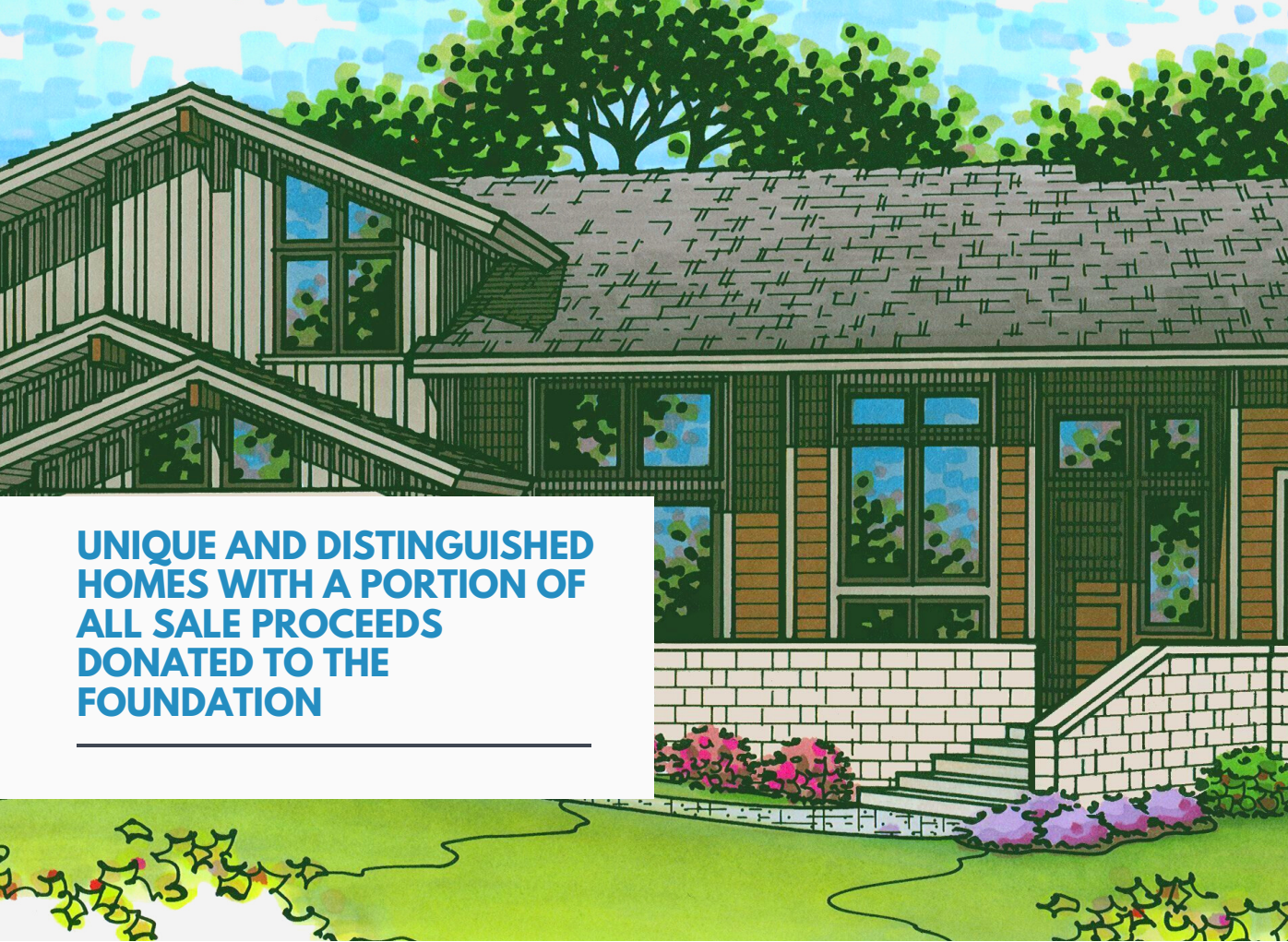


PARTNERS



*Building inclusion,
connection and support for
the autism community.*





UNIQUE AND DISTINGUISHED HOMES WITH A PORTION OF ALL SALE PROCEEDS DONATED TO THE FOUNDATION

Building Hope for Autism Foundation is a Kansas 501(c)3-designated not-for-profit organization that builds inclusion, connections and support for the autism community. From initial diagnosis through adult life, Building Hope for Autism accepts, supports and appreciates the strengths and needs of individuals with autism. By providing connections, services, and financial support at key milestones, the organization is determined to help individuals, families, caretakers, and other autism organizations build hope for any living with autism.



OUR STORY

The founders of Building Hope for Autism are Shawn Sabin and Paul Barnds. They are inspired to assist the autism community because of a very personal connection. Paul's grandson, Josh, and Shawn's niece, Stella, both are autistic.

A friendship between Shawn Sabin, Paul Barnds and Curtis and Susan Befort turned into a partnership to give back to the autism community, all out of the desire to bring people together and serve their fellow neighbors. This partnership is exceptionally unique in the world of business, and especially custom home building.

One day Paul Barnds had a conversation with his friend Curtis Befort, owner of Befort Construction LLC about an idea to build custom, high quality and distinguished homes in which a portion of all sale proceeds would be donated to Building Hope for Autism. Together they constructed a business plan and agreed that this partnership would be like nothing else out there and would be a great way for the community to learn about how they can get involved in supporting this local 501(c)3 non-profit organization.

Currently there are only 2 homes left for sale in the Johnson County area that were specifically designed and built for the purpose of being able to directly donate a portion of the proceeds to Building Hope for Autism.

Each custom home is built by Befort Construction LLC, with design concepts being developed by the partnership. Befort Construction, LLC has more than 25 years of experience and they bring an award-winning expertise to each of the homes they build that will support Building Hope for Autism Foundation.